

Cable ID	Summary	Test Limit	Length	Headroom	Date / Time
C6A-UTP-24AWG-10M-6	PASS	TIA Cat 6A Channel	39 ft	3.2 dB (NEXT)	04/15/2022 08:42 AM
C6A-UTP-24AWG-10M-5	PASS	TIA Cat 6A Channel	39 ft	5.4 dB (NEXT)	04/15/2022 08:41 AM
C6A-UTP-24AWG-10M-4	PASS	TIA Cat 6A Channel	39 ft	5.3 dB (NEXT)	04/15/2022 08:41 AM
C6A-UTP-24AWG-10M-3	PASS	TIA Cat 6A Channel	39 ft	4.3 dB (NEXT)	04/15/2022 08:41 AM
C6A-UTP-24AWG-10M-2	PASS	TIA Cat 6A Channel	39 ft	3.9 dB (NEXT)	04/15/2022 08:40 AM
C6A-UTP-24AWG-10M-1	PASS	TIA Cat 6A Channel	39 ft	6.1 dB (NEXT)	04/15/2022 08:39 AM

www.Fiber-Mart.com

Total Length:	234 ft
Number of Reports:	6
Number of Passing Reports:	6
Number of Failing Reports:	0
Number of Warning Reports:	0
Documentation Only:	0

[www.Fiber-Mart.com](http://www.Fiber-Mart.com)



**Cable ID: C6A-UTP-24AWG-10M-6**

Test Limit: TIA Cat 6A Channel

Limits Version: V7.1

Date / Time: 04/15/2022 08:42:04 AM

Operator: 01

Headroom 3.2 dB (NEXT 1,2-3,6)

Cable Type: Cat 6A U/UTP

NVP: 68.2%

Main: Versiv

S/N: 1747425

Software Version: V6.1 Build 3

Calibration Date: 05/11/2018

Adapter: DSX-8000 (DSX-CHA804)

S/N: 18260141

**Test Summary: PASS**

Remote: Versiv

S/N: 1747424

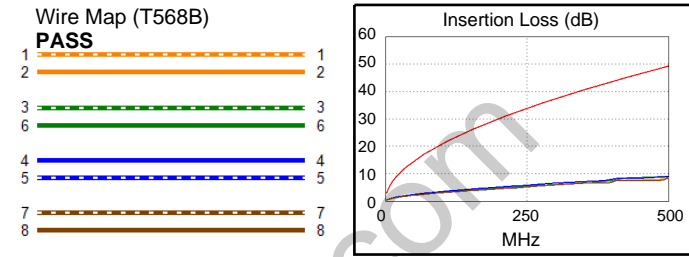
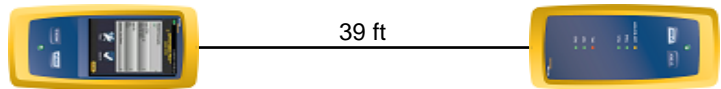
Software Version: V6.1 Build 3

Calibration Date: 05/11/2018

Adapter: DSX-8000R (DSX-CHA804)

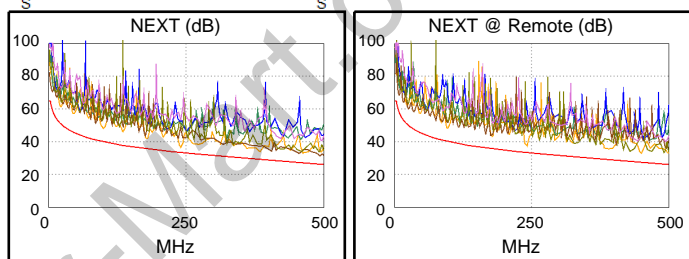
S/N: 18260315

Length (ft), Limit 328	[Pair 7,8]	39
Prop. Delay (ns), Limit 555	[Pair 4,5]	61
Delay Skew (ns), Limit 50	[Pair 4,5]	3
Resistance (ohms)	[Pair 7,8]	2.82
Insertion Loss Margin (dB)	[Pair 3,6]	40.4
Frequency (MHz)	[Pair 3,6]	500.0
Limit (dB)	[Pair 3,6]	49.3

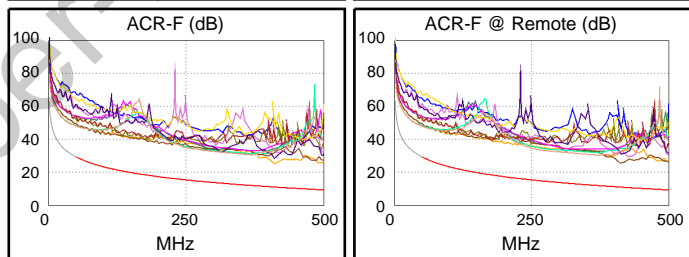


Worst Case Margin Worst Case Value

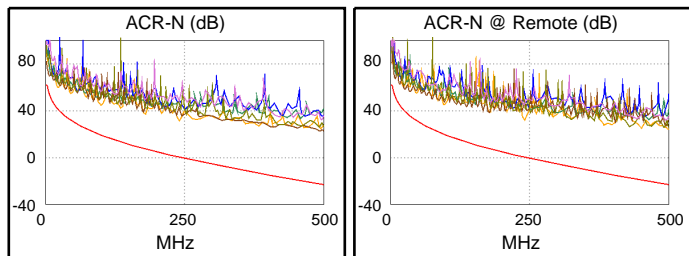
PASS	MAIN	SR	MAIN	SR
Worst Pair	1,2-3,6	1,2-3,6	3,6-4,5	1,2-3,6
<b>NEXT (dB)</b>	3.2	3.8	5.1	5.6
Freq. (MHz)	240.5	240.5	493.0	450.0
Limit (dB)	33.4	33.4	26.3	27.3
Worst Pair	3,6	3,6	3,6	3,6
<b>PS NEXT (dB)</b>	5.0	5.3	5.0	6.8
Freq. (MHz)	493.0	386.0	493.0	500.0
Limit (dB)	23.4	26.2	23.4	23.2



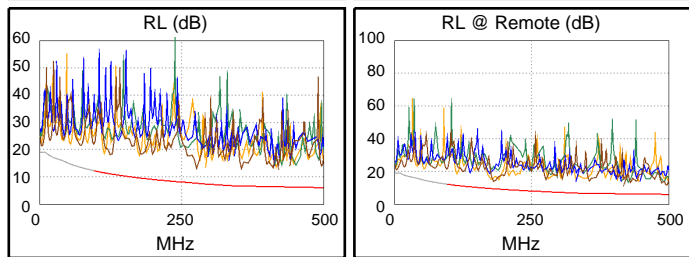
PASS	MAIN	SR	MAIN	SR
Worst Pair	1,2-3,6	3,6-1,2	1,2-3,6	3,6-1,2
<b>ACR-F (dB)</b>	14.0	14.5	14.0	14.5
Freq. (MHz)	411.0	411.0	411.0	411.0
Limit (dB)	11.0	11.0	11.0	11.0
Worst Pair	3,6	1,2	3,6	1,2
<b>PS ACR-F (dB)</b>	15.2	17.1	15.2	17.1
Freq. (MHz)	411.0	411.0	411.0	411.0
Limit (dB)	8.0	8.0	8.0	8.0



N/A	MAIN	SR	MAIN	SR
Worst Pair	3,6-4,5	3,6-4,5	3,6-4,5	1,2-3,6
<b>ACR-N (dB)</b>	14.4	14.9	45.3	47.3
Freq. (MHz)	3.1	7.0	493.0	500.0
Limit (dB)	61.1	53.7	-22.7	-23.2
Worst Pair	3,6	3,6	3,6	3,6
<b>PS ACR-N (dB)</b>	16.1	16.5	45.0	47.2
Freq. (MHz)	3.5	7.0	493.0	500.0
Limit (dB)	57.6	51.1	-25.5	-26.1



PASS	MAIN	SR	MAIN	SR
Worst Pair	7,8	7,8	7,8	7,8
<b>RL (dB)</b>	5.2	4.4	5.2	5.7
Freq. (MHz)	278.0	182.0	278.0	496.0
Limit (dB)	7.6	9.4	7.6	6.0



Compliant Network Standards:  
 10BASE-T      100BASE-TX      100BASE-T4  
 1000BASE-T    2.5GBASE-T      5GBASE-T  
 10GBASE-T    ATM-25            ATM-51  
 ATM-155      100VG-AnyLan    TR-4  
 TR-16 Active    TR-16 Passive



**Cable ID: C6A-UTP-24AWG-10M-5**

Test Limit: TIA Cat 6A Channel

Limits Version: V7.1

Date / Time: 04/15/2022 08:41:46 AM

Operator: 01

Headroom 5.4 dB (NEXT 3,6-4,5)

Cable Type: Cat 6A U/UTP

NVP: 68.2%

Main: Versiv

S/N: 1747425

Software Version: V6.1 Build 3

Calibration Date: 05/11/2018

Adapter: DSX-8000 (DSX-CHA804)

S/N: 18260141

**Test Summary: PASS**

Remote: Versiv

S/N: 1747424

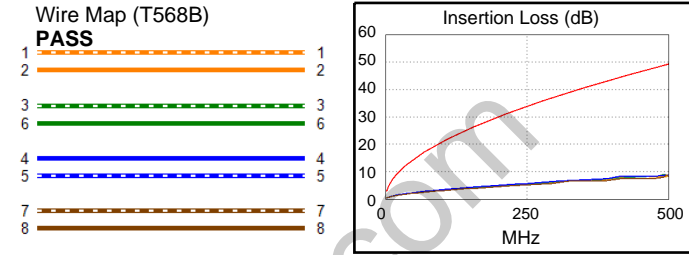
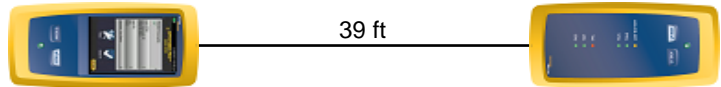
Software Version: V6.1 Build 3

Calibration Date: 05/11/2018

Adapter: DSX-8000R (DSX-CHA804)

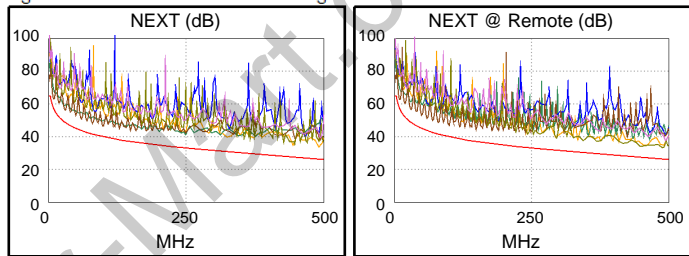
S/N: 18260315

Length (ft), Limit 328	[Pair 7,8]	39
Prop. Delay (ns), Limit 555	[Pair 4,5]	61
Delay Skew (ns), Limit 50	[Pair 4,5]	3
Resistance (ohms)	[Pair 7,8]	2.82
Insertion Loss Margin (dB)	[Pair 3,6]	39.8
Frequency (MHz)	[Pair 3,6]	491.0
Limit (dB)	[Pair 3,6]	48.8

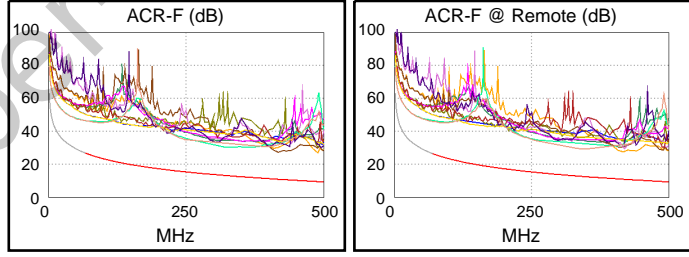


Worst Case Margin Worst Case Value

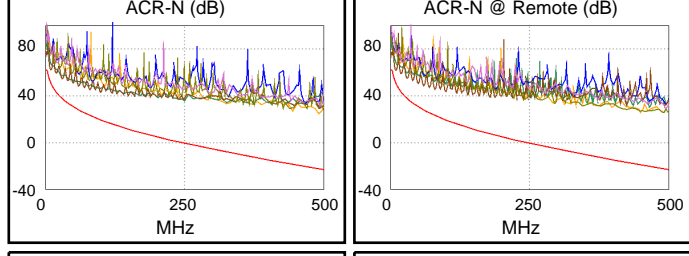
PASS	MAIN	SR	MAIN	SR
Worst Pair	3,6-4,5	3,6-4,5	1,2-3,6	3,6-7,8
<b>NEXT (dB)</b>	5.8	5.4	7.1	6.7
Freq. (MHz)	8.9	9.0	490.0	489.0
Limit (dB)	57.4	57.3	26.3	26.4
Worst Pair	3,6	3,6	3,6	3,6
<b>PS NEXT (dB)</b>	6.8	6.3	7.7	7.3
Freq. (MHz)	447.0	449.0	490.0	490.0
Limit (dB)	24.5	24.5	23.5	23.5



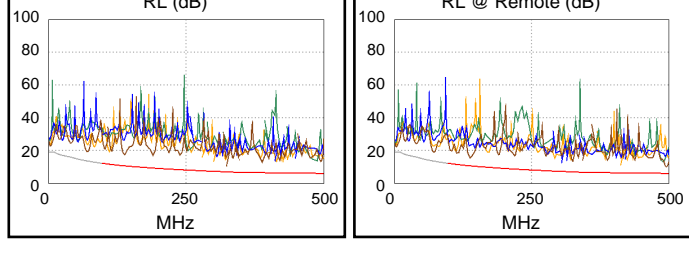
PASS	MAIN	SR	MAIN	SR
Worst Pair	3,6-1,2	1,2-3,6	1,2-3,6	1,2-3,6
<b>ACR-F (dB)</b>	16.4	16.1	16.8	16.1
Freq. (MHz)	437.0	438.0	487.0	438.0
Limit (dB)	10.4	10.4	9.5	10.4
Worst Pair	1,2	4,5	3,6	3,6
<b>PS ACR-F (dB)</b>	18.0	17.7	18.0	18.0
Freq. (MHz)	417.0	334.0	487.0	438.0
Limit (dB)	7.9	9.8	6.5	7.4



N/A	MAIN	SR	MAIN	SR
Worst Pair	3,6-4,5	3,6-4,5	1,2-3,6	3,6-7,8
<b>ACR-N (dB)</b>	10.8	10.4	46.8	47.7
Freq. (MHz)	8.5	8.5	490.0	489.0
Limit (dB)	51.8	51.8	-22.4	-22.3
Worst Pair	4,5	4,5	3,6	3,6
<b>PS ACR-N (dB)</b>	12.4	12.2	47.5	47.1
Freq. (MHz)	8.8	8.8	490.0	490.0
Limit (dB)	48.9	48.9	-25.3	-25.3



PASS	MAIN	SR	MAIN	SR
Worst Pair	3,6	7,8	3,6	7,8
<b>RL (dB)</b>	6.5	4.0	6.5	4.0
Freq. (MHz)	485.0	495.0	485.0	495.0
Limit (dB)	6.0	6.0	6.0	6.0



Compliant Network Standards:  
 10BASE-T      100BASE-TX      100BASE-T4  
 1000BASE-T    2.5GBASE-T      5GBASE-T  
 10GBASE-T    ATM-25            ATM-51  
 ATM-155      100VG-AnyLan    TR-4  
 TR-16 Active    TR-16 Passive



**Cable ID: C6A-UTP-24AWG-10M-4**

Test Limit: TIA Cat 6A Channel

Limits Version: V7.1

Date / Time: 04/15/2022 08:41:26 AM

Operator: 01

Headroom 5.3 dB (NEXT 3,6-7,8)

Cable Type: Cat 6A U/UTP

NVP: 68.2%

Main: Versiv

S/N: 1747425

Software Version: V6.1 Build 3

Calibration Date: 05/11/2018

Adapter: DSX-8000 (DSX-CHA804)

S/N: 18260141

**Test Summary: PASS**

Remote: Versiv

S/N: 1747424

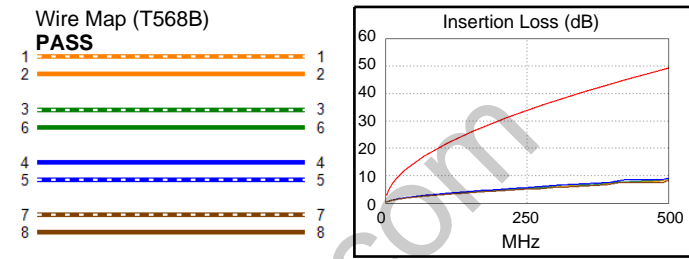
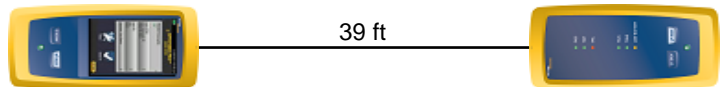
Software Version: V6.1 Build 3

Calibration Date: 05/11/2018

Adapter: DSX-8000R (DSX-CHA804)

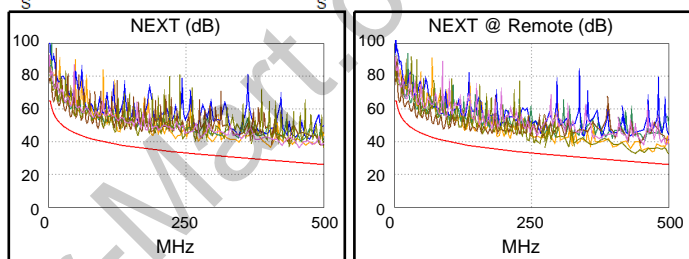
S/N: 18260315

Length (ft), Limit 328	[Pair 7,8]	39
Prop. Delay (ns), Limit 555	[Pair 4,5]	61
Delay Skew (ns), Limit 50	[Pair 4,5]	3
Resistance (ohms)	[Pair 4,5]	2.82
Insertion Loss Margin (dB)	[Pair 4,5]	40.1
Frequency (MHz)	[Pair 4,5]	497.0
Limit (dB)	[Pair 4,5]	49.1

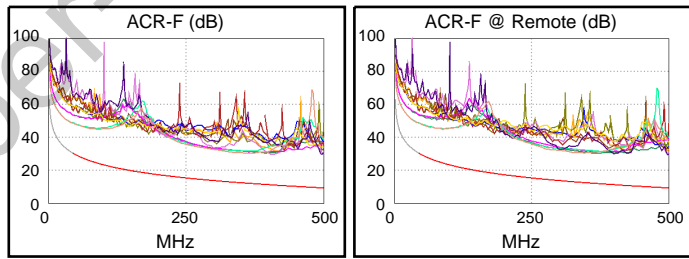


Worst Case Margin Worst Case Value

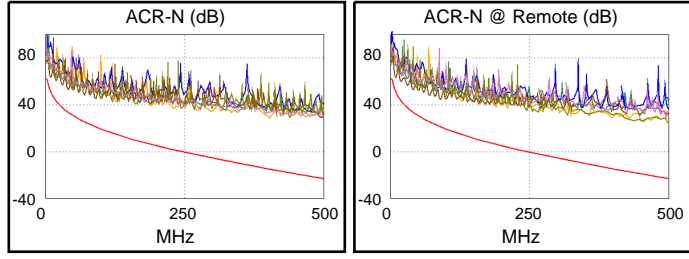
PASS	MAIN	SR	MAIN	SR
Worst Pair	3,6-4,5	3,6-7,8	3,6-7,8	3,6-7,8
<b>NEXT (dB)</b>	7.2	5.3	8.4	5.3
Freq. (MHz)	8.8	453.0	439.0	453.0
Limit (dB)	57.5	27.3	27.6	27.3
Worst Pair	3,6	3,6	3,6	3,6
<b>PS NEXT (dB)</b>	7.7	5.5	9.2	5.5
Freq. (MHz)	130.0	452.0	439.0	452.0
Limit (dB)	35.1	24.4	24.7	24.4



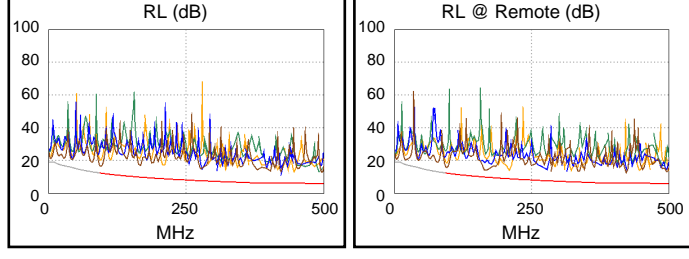
PASS	MAIN	SR	MAIN	SR
Worst Pair	4,5-7,8	7,8-4,5	3,6-7,8	7,8-3,6
<b>ACR-F (dB)</b>	16.4	16.4	18.5	18.1
Freq. (MHz)	3.3	3.3	404.0	404.0
Limit (dB)	53.0	53.0	11.1	11.1
Worst Pair	4,5	4,5	4,5	4,5
<b>PS ACR-F (dB)</b>	17.3	17.4	18.6	17.8
Freq. (MHz)	307.0	1.0	391.0	349.0
Limit (dB)	10.5	60.3	8.4	9.4



N/A	MAIN	SR	MAIN	SR
Worst Pair	3,6-4,5	3,6-4,5	3,6-7,8	3,6-7,8
<b>ACR-N (dB)</b>	12.1	11.8	51.6	47.9
Freq. (MHz)	8.0	8.5	500.0	499.0
Limit (dB)	52.4	51.8	-23.2	-23.1
Worst Pair	3,6	3,6	3,6	3,6
<b>PS ACR-N (dB)</b>	13.6	13.9	51.4	44.4
Freq. (MHz)	7.9	7.9	500.0	452.0
Limit (dB)	50.0	50.0	-26.1	-22.3



PASS	MAIN	SR	MAIN	SR
Worst Pair	7,8	7,8	7,8	7,8
<b>RL (dB)</b>	4.1	3.3	6.8	6.5
Freq. (MHz)	95.5	94.3	496.0	422.0
Limit (dB)	12.2	12.3	6.0	6.0



Compliant Network Standards:  
 10BASE-T      100BASE-TX      100BASE-T4  
 1000BASE-T    2.5GBASE-T      5GBASE-T  
 10GBASE-T    ATM-25            ATM-51  
 ATM-155      100VG-AnyLan    TR-4  
 TR-16 Active    TR-16 Passive



**Cable ID: C6A-UTP-24AWG-10M-3**

Test Limit: TIA Cat 6A Channel

Limits Version: V7.1

Date / Time: 04/15/2022 08:41:07 AM

Operator: 01

Headroom 4.3 dB (NEXT 3,6-4,5)

Cable Type: Cat 6A U/UTP

NVP: 68.2%

Main: Versiv

S/N: 1747425

Software Version: V6.1 Build 3

Calibration Date: 05/11/2018

Adapter: DSX-8000 (DSX-CHA804)

S/N: 18260141

**Test Summary: PASS**

Remote: Versiv

S/N: 1747424

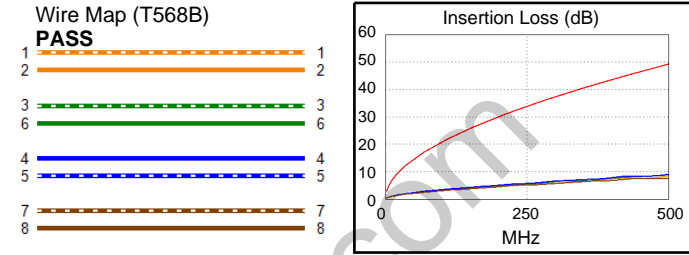
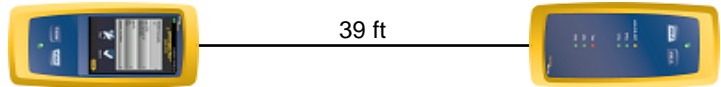
Software Version: V6.1 Build 3

Calibration Date: 05/11/2018

Adapter: DSX-8000R (DSX-CHA804)

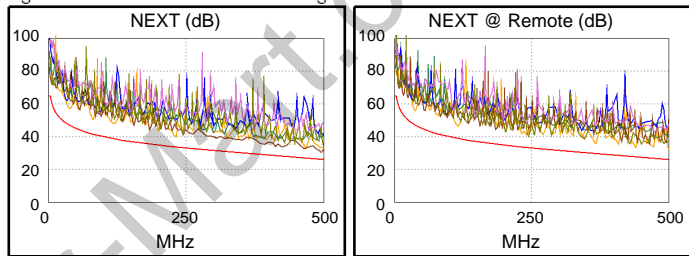
S/N: 18260315

Length (ft), Limit 328	[Pair 7,8]	39
Prop. Delay (ns), Limit 555	[Pair 4,5]	61
Delay Skew (ns), Limit 50	[Pair 4,5]	3
Resistance (ohms)	[Pair 7,8]	2.87
Insertion Loss Margin (dB)	[Pair 3,6]	40.4
Frequency (MHz)	[Pair 3,6]	500.0
Limit (dB)	[Pair 3,6]	49.3

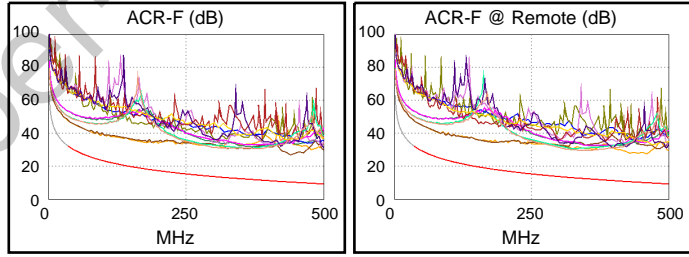


Worst Case Margin Worst Case Value

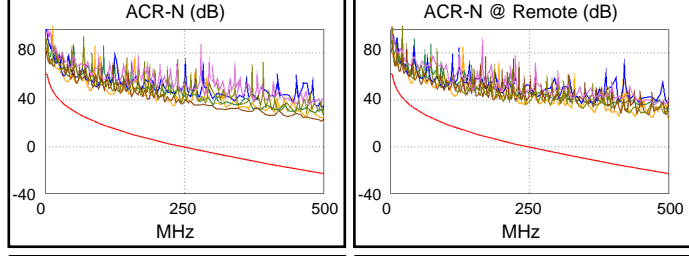
PASS	MAIN	SR	MAIN	SR
Worst Pair	3,6-4,5	1,2-3,6	3,6-4,5	1,2-3,6
<b>NEXT (dB)</b>	4.3	5.9	4.3	6.4
Freq. (MHz)	495.0	440.0	495.0	500.0
Limit (dB)	26.2	27.6	26.2	26.1
Worst Pair	3,6	3,6	3,6	3,6
<b>PS NEXT (dB)</b>	5.3	7.1	5.3	7.6
Freq. (MHz)	499.0	411.0	499.0	500.0
Limit (dB)	23.3	25.5	23.3	23.2



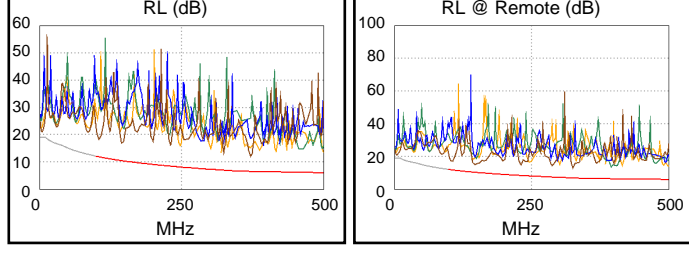
PASS	MAIN	SR	MAIN	SR
Worst Pair	1,2-3,6	3,6-1,2	3,6-1,2	1,2-3,6
<b>ACR-F (dB)</b>	14.9	15.0	16.5	16.1
Freq. (MHz)	93.3	93.3	439.0	439.0
Limit (dB)	23.9	23.9	10.4	10.4
Worst Pair	1,2	1,2	1,2	3,6
<b>PS ACR-F (dB)</b>	16.7	16.8	18.6	18.2
Freq. (MHz)	1.0	1.5	440.0	439.0
Limit (dB)	60.3	56.7	7.4	7.4



N/A	MAIN	SR	MAIN	SR
Worst Pair	1,2-3,6	3,6-4,5	3,6-4,5	1,2-3,6
<b>ACR-N (dB)</b>	13.9	16.1	44.4	46.8
Freq. (MHz)	2.9	7.1	495.0	500.0
Limit (dB)	61.4	53.5	-22.8	-23.2
Worst Pair	3,6	3,6	3,6	3,6
<b>PS ACR-N (dB)</b>	13.6	16.3	45.7	48.0
Freq. (MHz)	3.3	8.0	499.0	500.0
Limit (dB)	58.2	49.8	-26.0	-26.1



PASS	MAIN	SR	MAIN	SR
Worst Pair	7,8	7,8	7,8	7,8
<b>RL (dB)</b>	5.7	4.4	5.7	6.0
Freq. (MHz)	372.0	146.0	372.0	325.0
Limit (dB)	6.3	10.4	6.3	6.9



Compliant Network Standards:  
 10BASE-T      100BASE-TX      100BASE-T4  
 1000BASE-T    2.5GBASE-T  
 10GBASE-T    ATM-25            ATM-51  
 ATM-155      100VG-AnyLan    TR-4  
 TR-16 Active    TR-16 Passive





### Cable ID: C6A-UTP-24AWG-10M-2

Test Limit: TIA Cat 6A Channel

Limits Version: V7.1

Date / Time: 04/15/2022 08:40:40 AM

Operator: 01

Headroom 3.9 dB (NEXT 1,2-3,6)

Cable Type: Cat 6A U/UTP

NVP: 68.2%

Main: Versiv

S/N: 1747425

Software Version: V6.1 Build 3

Calibration Date: 05/11/2018

Adapter: DSX-8000 (DSX-CHA804)

S/N: 18260141

Remote: Versiv

S/N: 1747424

Software Version: V6.1 Build 3

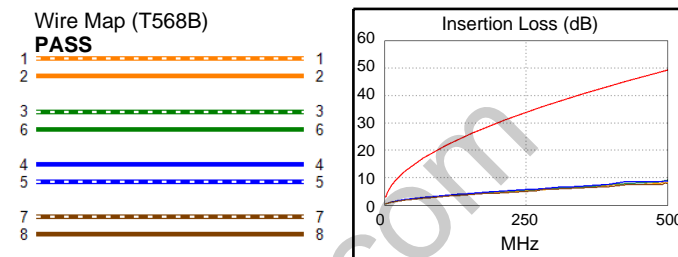
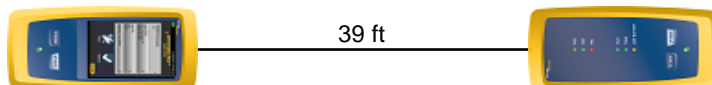
Calibration Date: 05/11/2018

Adapter: DSX-8000R (DSX-CHA804)

S/N: 18260315

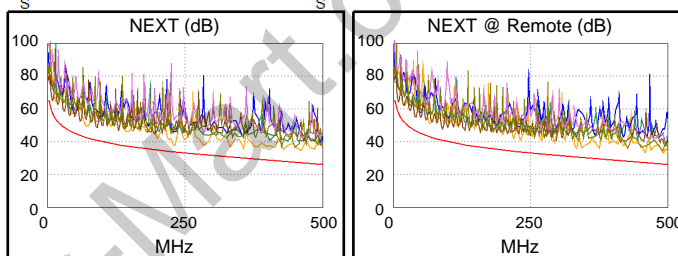
### Test Summary: PASS

Length (ft), Limit 328	[Pair 7,8]	39
Prop. Delay (ns), Limit 555	[Pair 4,5]	61
Delay Skew (ns), Limit 50	[Pair 4,5]	3
Resistance (ohms)	[Pair 7,8]	2.82
Insertion Loss Margin (dB)	[Pair 3,6]	40.2
Frequency (MHz)	[Pair 3,6]	500.0
Limit (dB)	[Pair 3,6]	49.3

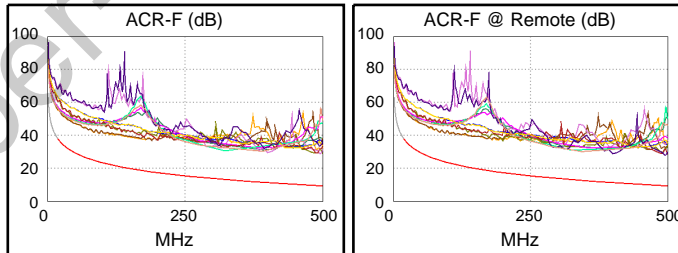


Worst Case Margin Worst Case Value

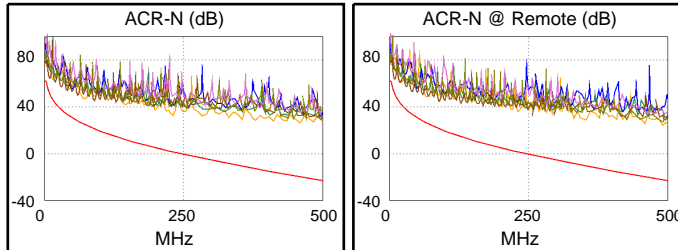
PASS	MAIN	SR	MAIN	SR
Worst Pair	1,2-3,6	1,2-3,6	1,2-3,6	1,2-3,6
<b>NEXT (dB)</b>	3.9	4.3	6.8	6.8
Freq. (MHz)	230.0	354.0	458.0	491.0
Limit (dB)	33.7	30.2	27.1	26.3
Worst Pair	1,2	3,6	3,6	3,6
<b>PS NEXT (dB)</b>	5.9	6.4	8.0	7.0
Freq. (MHz)	230.0	355.0	459.0	491.0
Limit (dB)	30.8	27.2	24.2	23.4



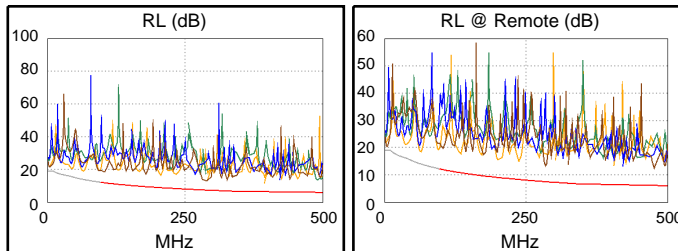
PASS	MAIN	SR	MAIN	SR
Worst Pair	1,2-3,6	7,8-4,5	3,6-4,5	7,8-3,6
<b>ACR-F (dB)</b>	16.9	16.8	19.1	18.4
Freq. (MHz)	84.0	325.0	489.0	495.0
Limit (dB)	24.8	13.0	9.5	9.4
Worst Pair	4,5	4,5	3,6	3,6
<b>PS ACR-F (dB)</b>	17.2	16.9	19.9	19.3
Freq. (MHz)	1.3	316.0	490.0	495.0
Limit (dB)	58.3	10.3	6.5	6.4



N/A	MAIN	SR	MAIN	SR
Worst Pair	3,6-4,5	3,6-4,5	1,2-3,6	1,2-3,6
<b>ACR-N (dB)</b>	12.7	11.9	46.1	47.0
Freq. (MHz)	8.3	8.0	458.0	492.0
Limit (dB)	52.1	52.4	-19.9	-22.6
Worst Pair	3,6	3,6	3,6	3,6
<b>PS ACR-N (dB)</b>	14.3	13.9	50.1	47.1
Freq. (MHz)	2.9	8.5	500.0	491.0
Limit (dB)	58.4	49.2	-26.1	-25.4



PASS	MAIN	SR	MAIN	SR
Worst Pair	7,8	7,8	7,8	7,8
<b>RL (dB)</b>	3.7	5.8	3.8	6.4
Freq. (MHz)	285.0	284.0	286.0	476.0
Limit (dB)	7.5	7.5	7.4	6.0



Compliant Network Standards:

10BASE-T	100BASE-TX	100BASE-T4
1000BASE-T	2.5GBASE-T	5GBASE-T
10GBASE-T	ATM-25	ATM-51
ATM-155	100VG-AnyLan	TR-4
TR-16 Active	TR-16 Passive	



**Cable ID: C6A-UTP-24AWG-10M-1**

Test Limit: TIA Cat 6A Channel

Limits Version: V7.1

Date / Time: 04/15/2022 08:39:49 AM

Operator: 01

Headroom 6.1 dB (NEXT 1,2-3,6)

Cable Type: Cat 6A U/UTP

NVP: 68.2%

Main: Versiv

S/N: 1747425

Software Version: V6.1 Build 3

Calibration Date: 05/11/2018

Adapter: DSX-8000 (DSX-CHA804)

S/N: 18260141

**Test Summary: PASS**

Remote: Versiv

S/N: 1747424

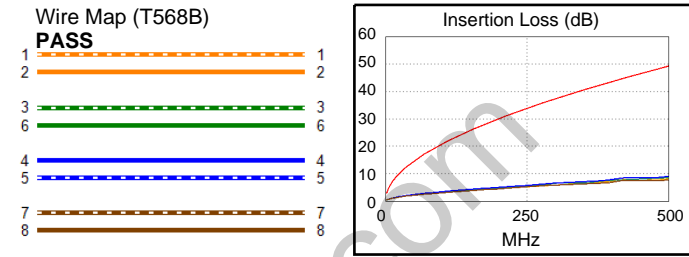
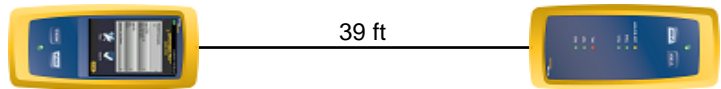
Software Version: V6.1 Build 3

Calibration Date: 05/11/2018

Adapter: DSX-8000R (DSX-CHA804)

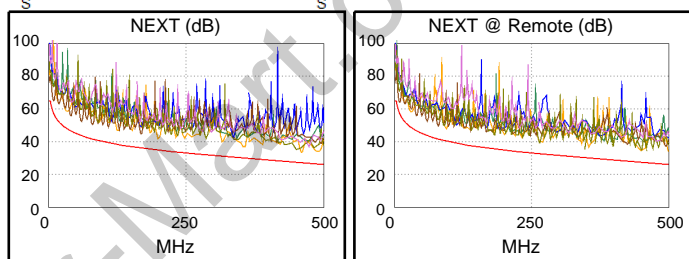
S/N: 18260315

Length (ft), Limit 328	[Pair 7,8]	39
Prop. Delay (ns), Limit 555	[Pair 4,5]	61
Delay Skew (ns), Limit 50	[Pair 4,5]	3
Resistance (ohms)	[Pair 7,8]	2.92
Insertion Loss Margin (dB)	[Pair 4,5]	40.1
Frequency (MHz)	[Pair 4,5]	497.0
Limit (dB)	[Pair 4,5]	49.1

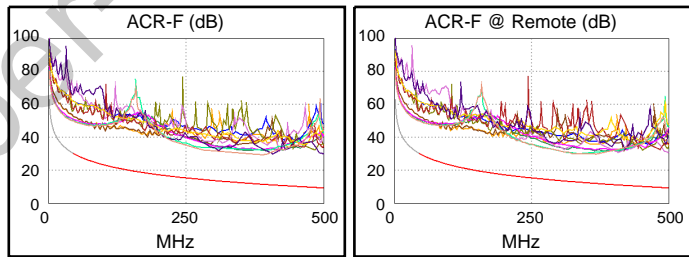


Worst Case Margin Worst Case Value

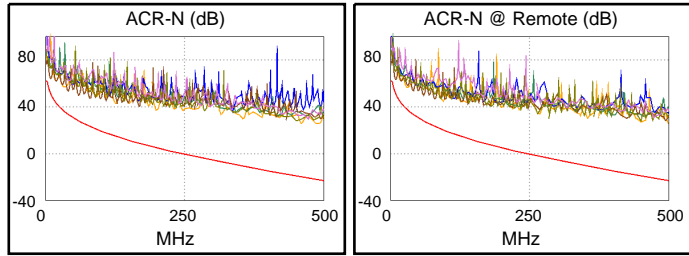
PASS	MAIN	SR	MAIN	SR
Worst Pair	1,2-3,6	1,2-3,6	1,2-3,6	1,2-3,6
<b>NEXT (dB)</b>	6.1	6.4	6.3	8.2
Freq. (MHz)	355.0	354.0	460.0	499.0
Limit (dB)	30.1	30.2	27.1	26.1
Worst Pair	3,6	3,6	3,6	3,6
<b>PS NEXT (dB)</b>	7.1	6.3	7.6	7.2
Freq. (MHz)	460.0	266.0	481.0	449.0
Limit (dB)	24.2	29.7	23.7	24.5



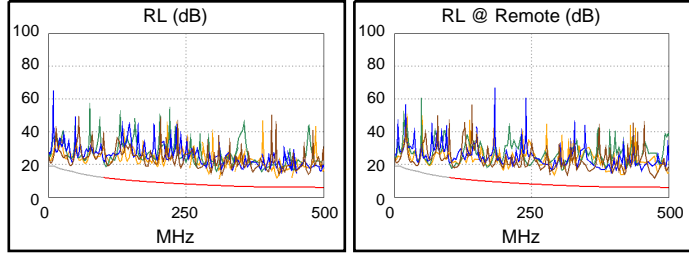
PASS	MAIN	SR	MAIN	SR
Worst Pair	7,8-4,5	7,8-4,5	7,8-4,5	7,8-4,5
<b>ACR-F (dB)</b>	16.3	16.8	16.7	16.8
Freq. (MHz)	331.0	338.0	352.0	338.0
Limit (dB)	12.9	12.7	12.3	12.7
Worst Pair	4,5	4,5	4,5	4,5
<b>PS ACR-F (dB)</b>	17.7	17.7	18.7	17.7
Freq. (MHz)	1.1	339.0	389.0	339.0
Limit (dB)	59.2	9.7	8.5	9.7



N/A	MAIN	SR	MAIN	SR
Worst Pair	3,6-4,5	3,6-4,5	1,2-3,6	1,2-3,6
<b>ACR-N (dB)</b>	12.4	11.6	47.2	49.0
Freq. (MHz)	8.3	8.3	482.0	500.0
Limit (dB)	52.1	52.1	-21.8	-23.2
Worst Pair	3,6	3,6	3,6	3,6
<b>PS ACR-N (dB)</b>	14.4	13.3	47.8	49.6
Freq. (MHz)	7.9	7.9	482.0	500.0
Limit (dB)	50.0	50.0	-24.7	-26.1



PASS	MAIN	SR	MAIN	SR
Worst Pair	1,2	7,8	1,2	7,8
<b>RL (dB)</b>	5.8	5.6	5.8	5.6
Freq. (MHz)	415.0	475.0	415.0	475.0
Limit (dB)	6.0	6.0	6.0	6.0



Compliant Network Standards:  
 10BASE-T      100BASE-TX      100BASE-T4  
 1000BASE-T    2.5GBASE-T      5GBASE-T  
 10GBASE-T    ATM-25            ATM-51  
 ATM-155      100VG-AnyLan    TR-4  
 TR-16 Active    TR-16 Passive